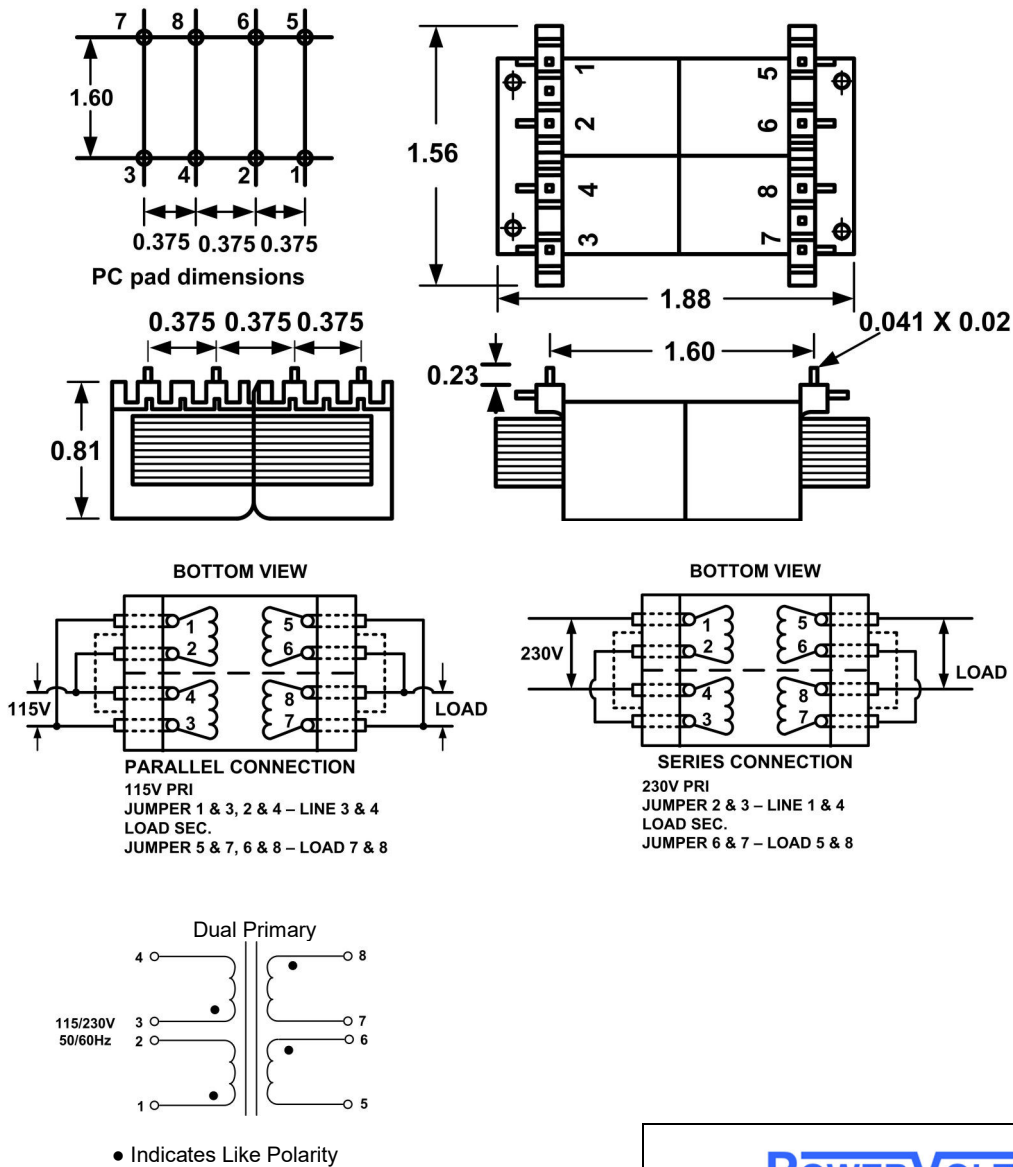


FZ - PRINTED CIRCUIT MOUNT, LOW PROFILE POWER TRANSFORMER



1. Electrical Specifications

- A. Maximum Power: 6VA
- B. Input Voltage and Frequency: 115/230V @ 50/60Hz
- C. Voltage Regulation: 21% TYP, Full Load to No Load
- D. Temperature Rise: 30°C TYP
- E. Insulation Resistance: < 1 MEG ohm
- F. Hi-Pot: 1500 Vrms 1 minute

2. Agency Approval:

UL/cUL 5085-2 Recognized (File E47299)
 Insulation File No. E95662



Part No.	115/230V	Series Connection	Parallel Connection
FZ 10-600	10VCT @ 0.600A		5V @ 1.20A
FZ 12-450	12.6VCT @ 0.450A		6.3V @ 0.900A
FZ 16-350	16VCT @ 0.350A		8V @ 0.700A
FZ 20-300	20VCT @ 0.300A		10V @ 0.600A
FZ 24-250	24VCT @ 0.250A		12V @ 0.500A
FZ 30-200	30VCT @ 0.200A		15V @ 0.400A
FZ 34-170	34VCT @ 0.170A		17V @ 0.340A
FZ 40-150	40VCT @ 0.150A		20V @ 0.300A
FZ 56-100	56VCT @ 0.100A		28V @ 0.200A
FZ 88-65	88VCT @ 65MA		44V @ 130MA
FZ 120-50	120VCT @ 50MA		60V @ 100MA
FZ 230-25	230VCT @ 25MA		115V @ 50MA
WEIGHT : 7 Oz.			

	POWER TRANSFORMER		FZ 10-XXX	
	CONTENTS OF THIS DRAWING ARE SUBJECT TO CHANGE WITHOUT PRIOR NOTICE		Powervolt, Inc. 300 W Factory Road, Addison, IL -60101	
PROPRIETARY NOTICE: THIS DRAWING PRINT OR DOCUMENT AND SUBJECT MATTER DISCLOSED HEREIN ARE PROPRIETARY ITEMS TO WHICH POWERSVOLT RETAINS THE EXCLUSIVE RIGHT OF DISSEMINATION, MANUFACTURE AND SALE. THIS DRAWING, PRINT OR DOCUMENT IS SUBMITTED IN CONFIDENCE FOR CONSIDERATION BY THE RECIPIENT ALONE UNLESS PERMISSION FOR FURTHER DISCLOSURE IS EXPRESSLY GRANTED IN WRITING		Dim: Inches	Sheet 1 of 1	